

CERTIFICATE OF LOCATION OF GOVERNMENT CORNER

NORTHEAST Corner of Section 32, Township 107N, Range 39W

5th Principal Meridian, State of Minnesota, County of MURRAY

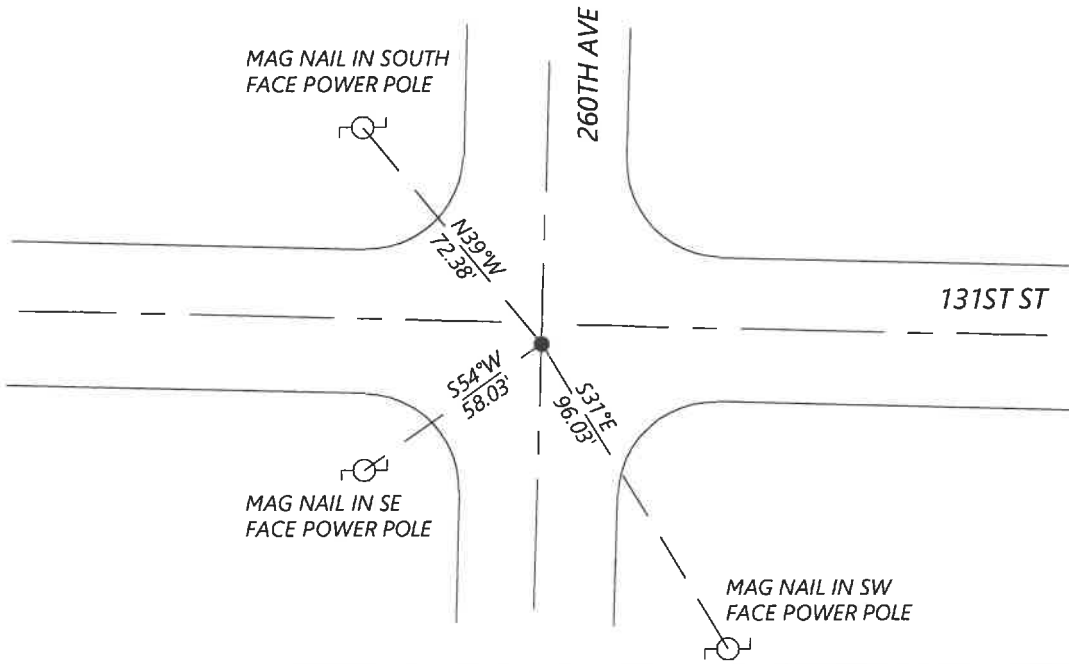
At the corner location shown on the sketch:

On 8/27/2020 found a SURVEY PLUNGER AND DISK FLUSH WITH ASPHALT
DATE

left monument as found lowered monument removed monument (explain)

On _____ placed a _____
DATE

SKETCH OF REFERENCE TIES



Statement of evidence for this corner location is on back of this page.

I hereby certify that this document was researched and prepared by me or under my direct supervision and that I am a licensed Land Surveyor under the laws of the State of Minnesota.

Signature [Handwritten Signature]
Date 6/16/2021 License No. 45874

Title:

- Land Surveyor Professional Engineer
- County Surveyor County Engineer

OFFICE OF THE COUNTY RECORDER

County of Murray

I hereby certify that this document was filed in the Co.

Recorder's office at _____ .M. on the _____ day of _____ .A.D. 20

County Recorder [Handwritten Signature: Karen Brown]

by JUN 22 2021, Deputy

DOCUMENT NO. _____

Statement of Evidence:

Northeast Corner of Section 32, Township 107 North, Range 39 West, 5th Principal Meridian, Murray County, Minnesota.

No GLO notes found.

- April 1981 Highway Department records show a found concrete monument, and placed a steel pin over it.*
- April 2011 Corner certificate filed by LS43844 shows a found PK nail and replaced with survey spike and seal #43844. He lists the Murray County coordinates (1996 adj.) as N: 168755.25 E: 558896.85*
- Sept. 2020 Westwood Professional Services searched and found survey spike and disk at the corner. Coordinates fit with 2011 corner certificate. Did not recover any ties, set three new ones.*

Analysis of the recovered data, field evidence and survey measurements, indicates that the monument found is the correct perpetuation of this corner. For additional information concerning this corner please contact Westwood Professional Services.